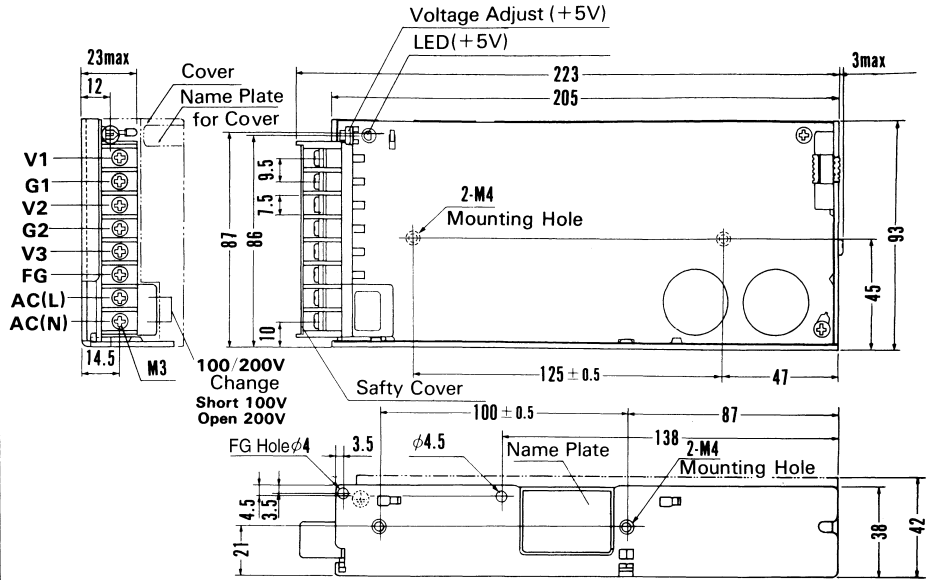
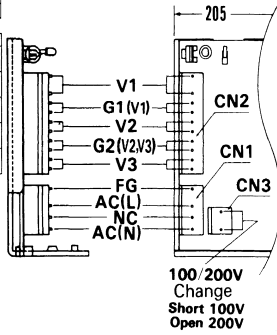


External view

(PIN CONNECTION)

PIN NO.	INPUT
1	FG
2	AC(L)
3	NC
4	AC(N)

PIN NO.	OUTPUT
1	V1
2	G1
3	V2
4	G2
5	V3
6	G1(V1)
7	G2(V2V3)
8	V1
9	V2
10	V3



I/O Connector	Mating Connector	Terminal
CN1	5289-4A	5199-04
CN2	5277-10A	5196-10
CN3	5289-2A	5199-02

(Mfr: Molex)

Connector type

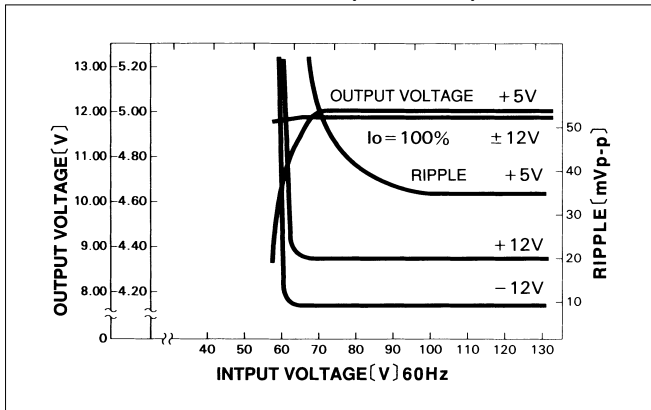
Barrier strip type

※V1 is isolated from V2 & V3.

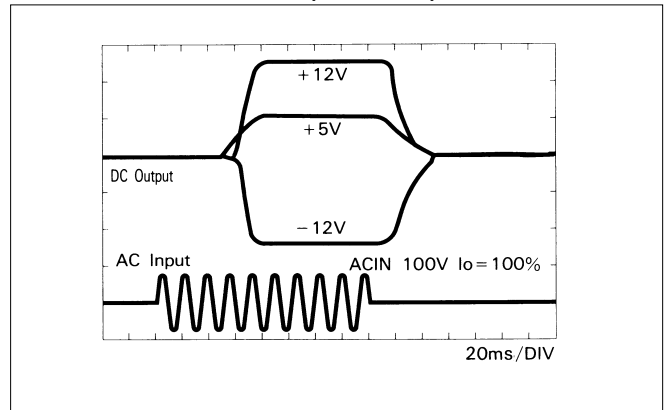
※ Weight: 600g or less.    ※ Cover is optional  
 ※ Tolerance: ±1    ※ Dimensions in mm  
 ※ Mounting torque: 1.2N·m (12.8kgf·cm) max

Performance data

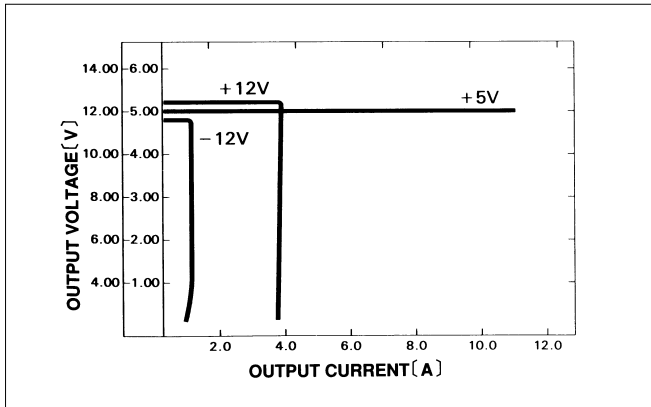
■ STATIC CHARACTERISTICS (PMC75E-1)



■ RISE TIME & FALL TIME (PMC75E-1)



■ OVERCURRENT CHARACTERISTICS (PMC75E-1)



■ DERATING CURVE

