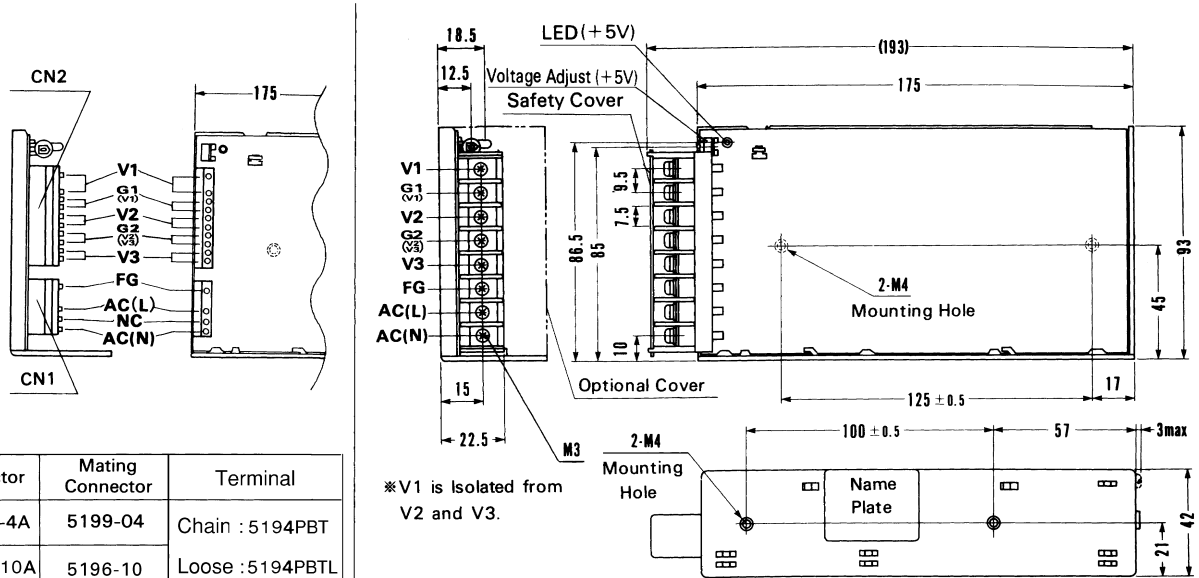


External view



I/O Connector	Mating Connector	Terminal
CN1	5289-4A	5199-04
CN2	5277-10A	5196-10

Chain : 5194PBT
Loose : 5194PBTL
(Mfr: Molex)

※Use J cover for connector type.

Connector type

※Mounting torque : 1.2N·m (12.8kgf·cm) max

Barrier strip type

※Weight: 600g or less

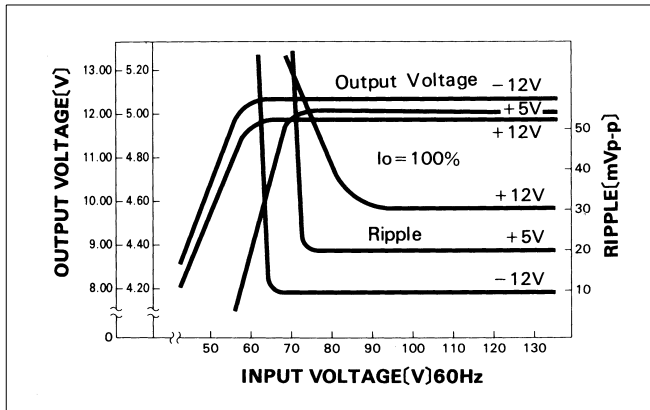
※Cover is optional

※Tolerance: ±1

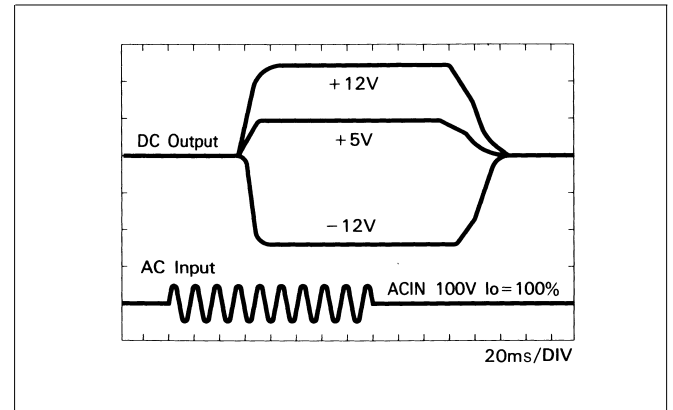
※Dimensions in mm.

Performance data

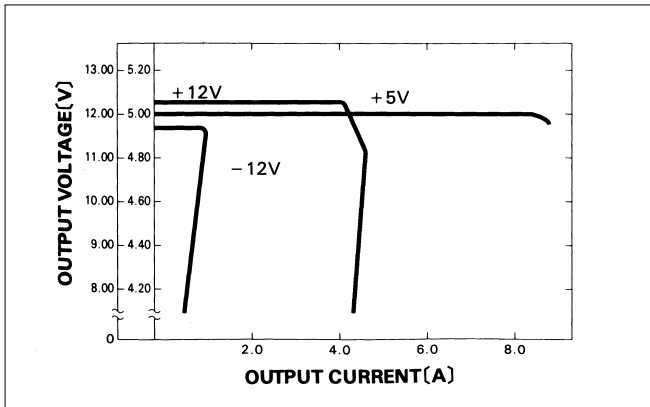
■STATIC CHARACTERISTICS (MMC75A-4)



■RISE TIME & FALL TIME (MMC75A-4)



■OVERCURRENT CHARACTERISTICS (MMC75A-4)



■DERATING CURVE

