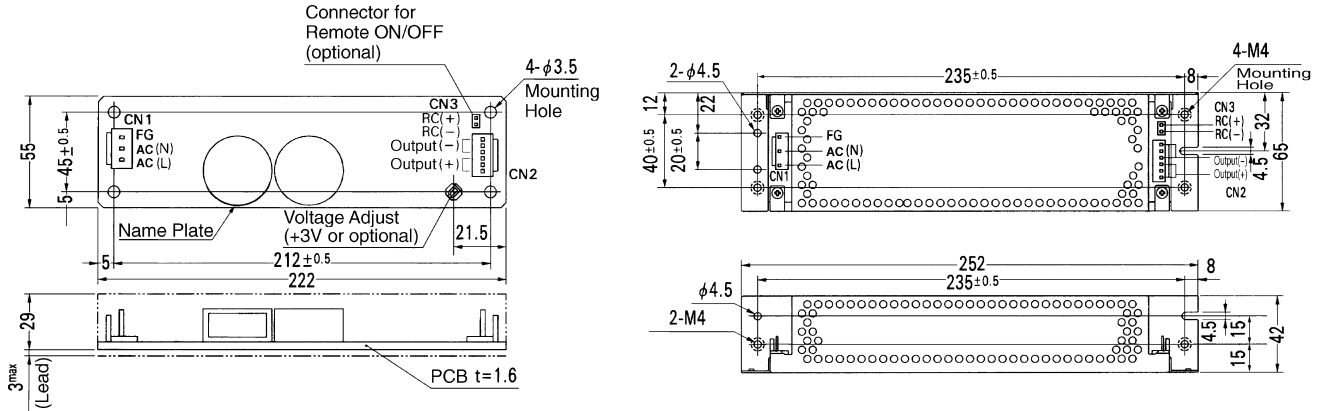


External view



| I/O Connector | Mating Connector | Terminal                                              |
|---------------|------------------|-------------------------------------------------------|
| CN1           | B3P5-VH          | VHR-5N<br>Chain: SVH-21T-P1.1<br>Loose: BVH-21T-P1.1  |
| CN2           | B4P-VH           | VHR-6N<br>Chain: SVH-21T-P1.1<br>Loose: BVH-21T-P1.1  |
| CN3           | B2B-XH-A         | XHP-2<br>Chain: SXH-001T-P0.6<br>Loose: BXH-001T-P0.6 |

<PIN CONNECTION>

| Pin No. | Input |
|---------|-------|
| 1       | AC(L) |
| 2       |       |
| 3       | AC(N) |
| 4       |       |
| 5       | FG    |

| Pin No. | Output |
|---------|--------|
| 1~3     | -V     |
| 4~6     | +V     |

| Pin No. | Remote ON/OFF |
|---------|---------------|
| 1       | RC(+)         |
| 2       | RC(-)         |

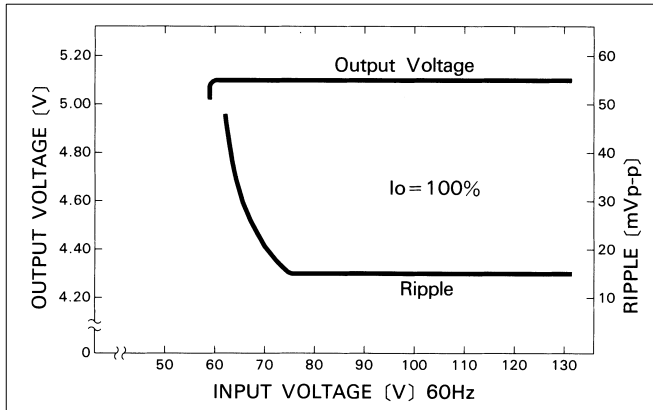
※ Keep drawing current per pin below 5A for CN2.

- ※ Weight : 320g or less (Without chassis and cover)
- ※ Tolerance : ±1
- ※ Dimensions in mm.
- ※ PCB Material : Glass composite (CEM3)
- ※ Chassis and cover is optional.
- ※ Mounting torque : 1.5 N·m (16 kgf·cm) max

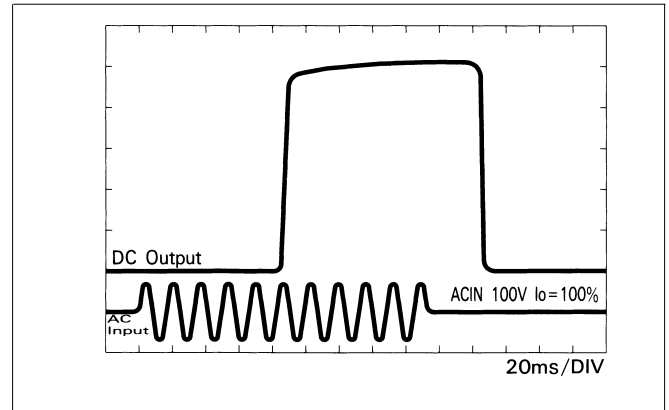
LDA

Performance data

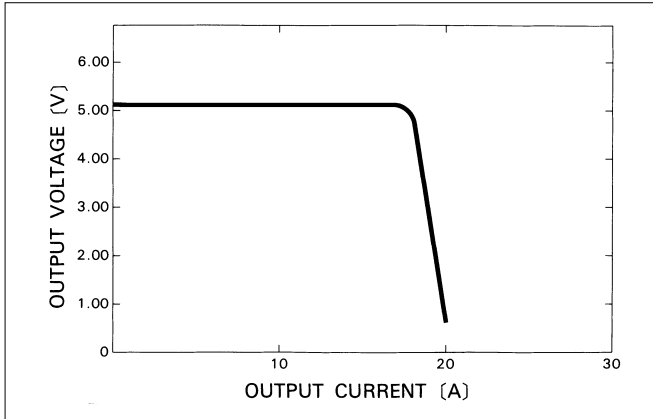
■ STATIC CHARACTERISTICS (LDA75F-5)



■ RISE TIME & FALL TIME (LDA75F-5)



■ OVERCURRENT CHARACTERISTICS (LDA75F-5)



■ DERATING CURVE

